

# Copper Clad Aluminium (CCA) Conductor





ITEM

Round Wire Rod (CCA)

SPEC

Diameter - 8.0 mm $\Phi$

Diameter - 5.0 mm $\Phi$

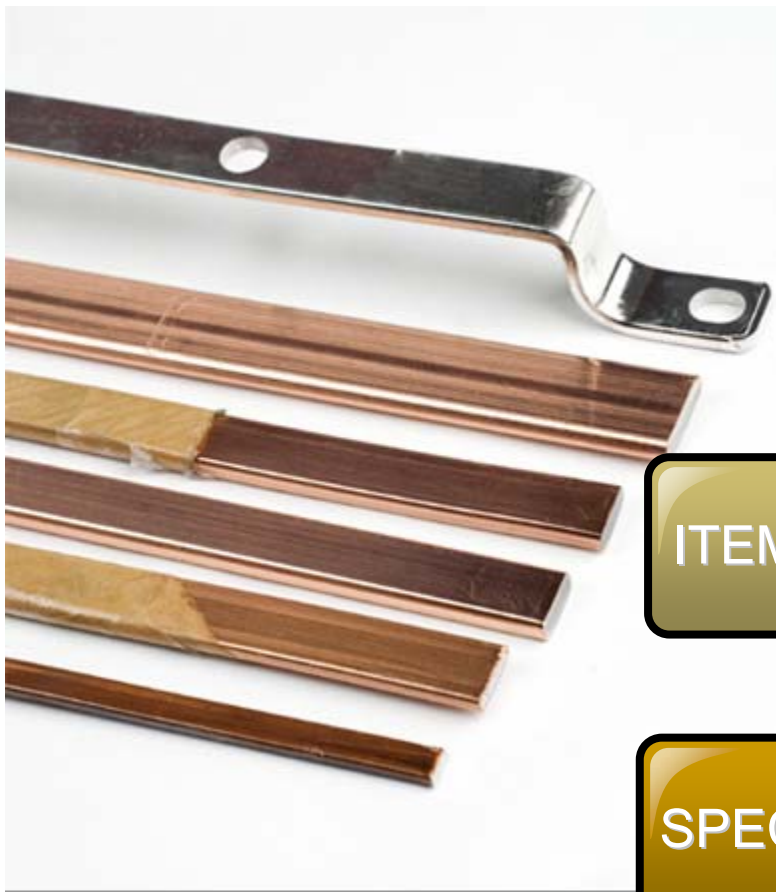
Diameter - 2.6 mm $\Phi$

USE

Cobductor products for Insulation Wire & Cable

Cobductor products for Enamelled Wire

와이어 & 케이블 가공용 도체



ITEM

Flat wire (bare)(CCA)

SPEC

Bare flat wire

USE

Products for Transformer winding  
Products for Moter, Generator & Welding Machine winding  
변압기, 모타, 발전기, 용접기 권선용



ITEM

Busbar(CCA)

SPEC

Round type  
Square type

USE

Products for Distribution board  
Products for Switchgear & Controlgear Assemblies  
Products for Transformer Input / Output terminal  
분.배전반 제작



ITEM

UTP LAN Cable(CCA)

SPEC

CAT 5e.-Gray-300m  
CAT 5e.-Blue-300m  
CAT 5e.-Orange-300m  
Normal CM type

USE

Local area network cable, Unshielded Twist Pair  
Communication wire for PC  
근거리 통신용 CAT 5 E. ( 100MHz ), CM-일반배선용



ITEM

## Speaker & Sound Cable (CCA)

SPEC

1.25SQ-Parallel(Clear)  
0.75SQ-Parallel(Clear)  
60 °C, 100m, 200m

USE

Hi-Fi, stereo, miniature juke box, Automotive speaker cable  
앰프와 스피커 연결 음향신호 전송





ITEM

Signal(Data) cable(CCA)

SPEC

20~24 AWG  
Shield or Normal  
2C ~ 10C (가닥수)

USE

**Control cable**  
**Signal cable**

전기,전자기기의 신호전송용 케이블, 컴퓨터 주변기기 신호용





ITEM

Insulation Cable(CCA)  
(Building Cable)

SPEC

TW-60℃  
THW-75℃  
THHN/THHW-90℃  
HIV/HKIV-90℃

USE

Thermoplastic-insulated wire of UL 83 type  
600V/1000V Heat resistant PVC insulated wire (HIV)  
600V/1000V Heat resistant PVC insulated flexible wire (HKIV)  
600V/1000V 비닐절연전선, 옥내용 빌딩케이블 등 옥내 배선용



ITEM

## POWER CABLE(CCA)

SPEC

OW-22 SQMM  
OW-38 SQMM  
Max. Size : 150SQMM

USE

**600V PVC insulated wire outdoor cable (OW)**

옥외용 비닐 절연 전선 - 600V 이하 저압가공 배전선로에 사용



ITEM

Welding Cable(CCA)

SPEC

WCT-30 SQMM  
WCT-55 SQMM  
Size : Order Made

USE

**Welding electrode cables**

Flexible cable for Battery & Ark welding machine output lead  
배터리 및 아크용접기의 2차측에 사용되는 케이블임



ITEM

Magnet wire(CCA)  
(Enamelled wire)(CCA)

SPEC

PEW wire(Polyester coated)  
UEW wire(Polyurethane coated)  
Size : 0.09mm $\Phi$ ~2.5mm $\Phi$   
Class : 1class, 2class  
Other coating : Al/EIW, Self-bonding etc

USE

Products for Transformer winding  
Products for Moter, Generator & Welding Machine winding  
변압기, 모터, 발전기, 용접기 권선용, PCB 코일용  
온도등급 : 130 °C, 155°C, 180°C



ITEM

USTC Enamelled wire(CCA)

SPEC

0.10 / 10 USTC wire  
0.11 / 10 USTC wire  
Size : Order Made

USE

Polyurethane Silk-covered (Tetron Litz Coil) enamelled wire  
High Frequency small power transformer coil for PCB(PWB)  
Small power transformer coil for SMPS or ballast  
조명기기, 전자회로, 안정기 PCB회로내부 고주파회로 트랜스 코일



ITEM

TJV Jumper wire (CCA)

SPEC

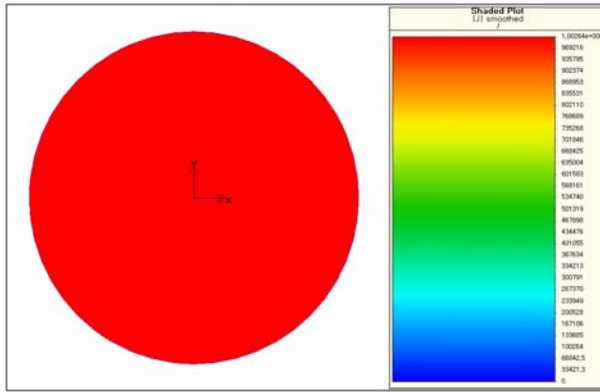
1.1mm $\Phi$ -2C(R/Y)  
1.1mm $\Phi$ -3C(R/Y/B)  
70 °C, 300m

USE

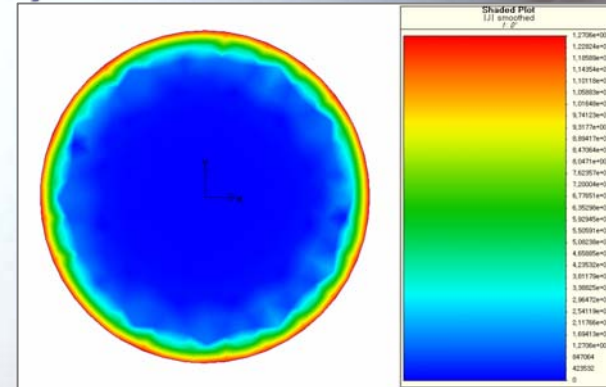
**PVC insulated jumper wire of low voltage**  
Signal wire for Interphone, videophone & electronic machine etc  
자동제어, 비디오폰, 인터폰 등 통신신호 전송용 와이어

## BASIC CONCEPT OF BACKGROUND THEORY

### Skin effect of Cu ( $J=1A/mm^2$ )

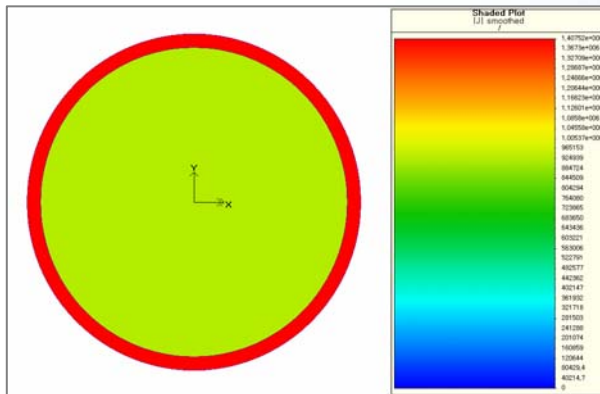


DC

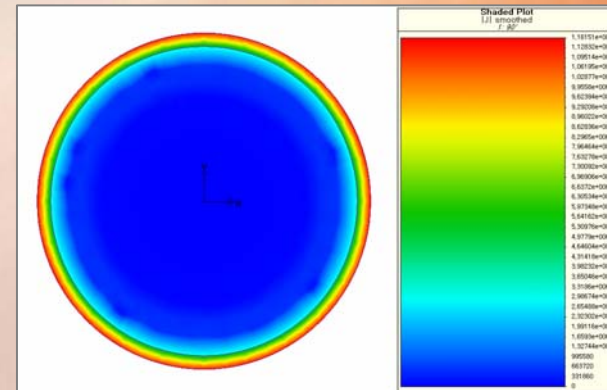


1M Hz

### Skin effect of CCA ( $J=1A/mm^2$ )

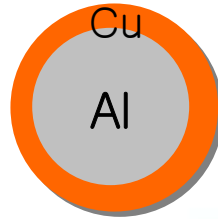


DC

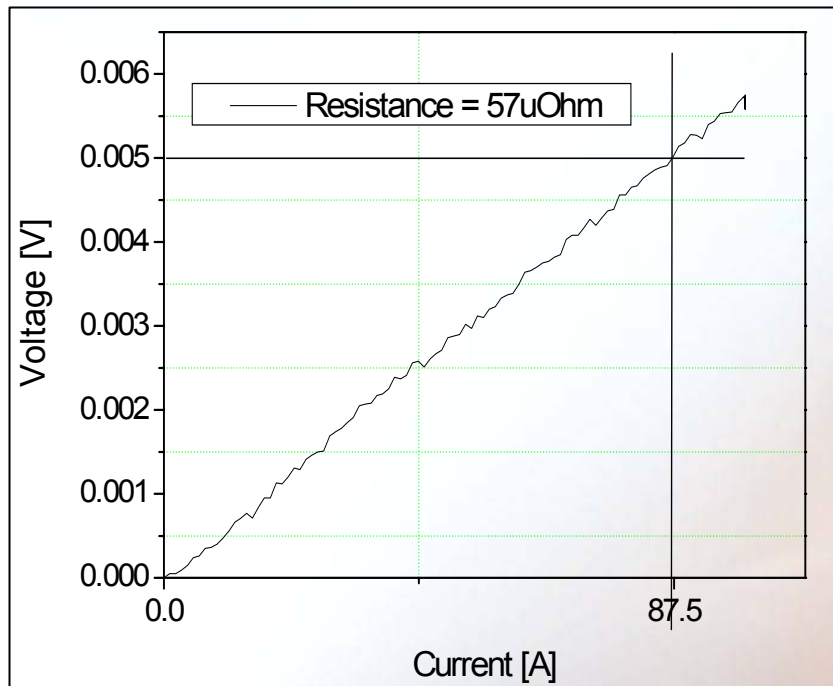


1M Hz

## BASIC CONCEPT OF BACKGROUND THEORY



- DIA : 15.9mm
- V/RATE: Cu (30%) AL (70%)



	Resistivity ( m)	IACS%
DC	2.26e-8	76.3
60Hz	2.26e-8	76.3
100Hz	2.223e-8	77.3
200Hz	2.128e-8	80.8
300Hz	1.965e-8	87.5
1000Hz	1.811e-8	95.0
10kHz	1.72e-8	99.9